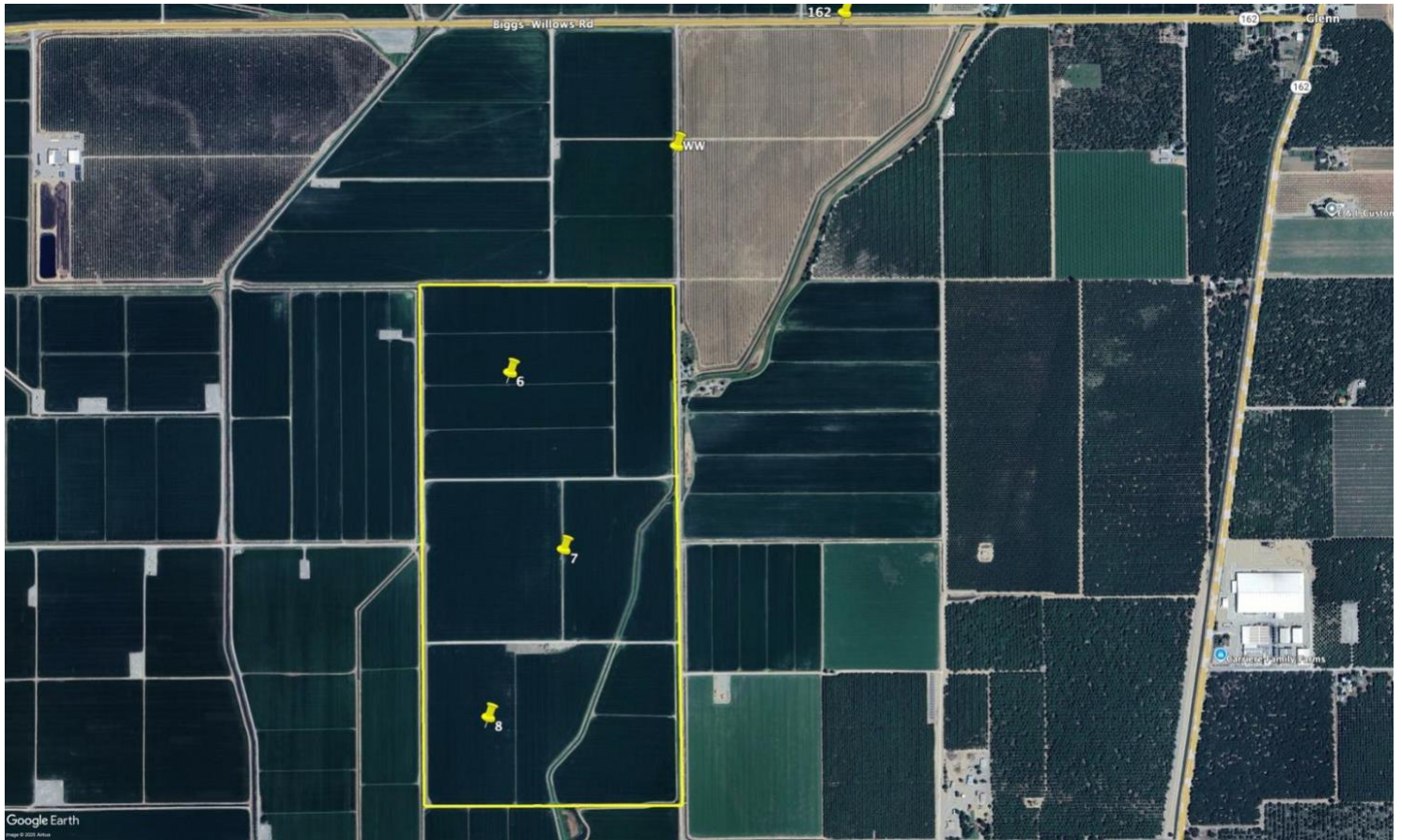


Glenn



East West Duck Club

This club is located southwest of the town of Glenn. It's cross roads are Hwy 162 and WW road. The property is just over 305 acres with 3 blinds in rice. This property shoots 7 days a week and gets water near the opener. Easy walkable access to blinds.

Shoots 7 days a week In Speck Closure

Season opens once farming is finished, through junior hunt and late goose

Current blinds open:

Blind #6– 4 man blind 110 acres \$1875 per seat

Richvale



North Pintail Duck Club

This club is located southwest of the town of Richvale. It's cross roads are Hwy 162 and Wickman road. The property is just over 800 acres with 10 blinds in rice. This property shoots 7 days a week and gets water near the opener.

Trailer parking available for additional fee \$400 Shoots 7 days a week
Season opens once farming is finished, through junior hunt and late goose

Current blinds open:

Blind #3 – 4man blind 90 acres *\$2,125 per seat*

Blind #5 – 4man blind 70 acres *\$1,700 per seat*

Richvale



Central Flyway Duck Club

This club is located south of Hwy 162 and west of Wickman rd. The property is just under 500 acres with 4 blinds in rice. This property shoots 7 days a week and gets water near the opener. Parking area is off Wickman rd. for blinds 1-3 and parking is in the northeast corner on blind 4.

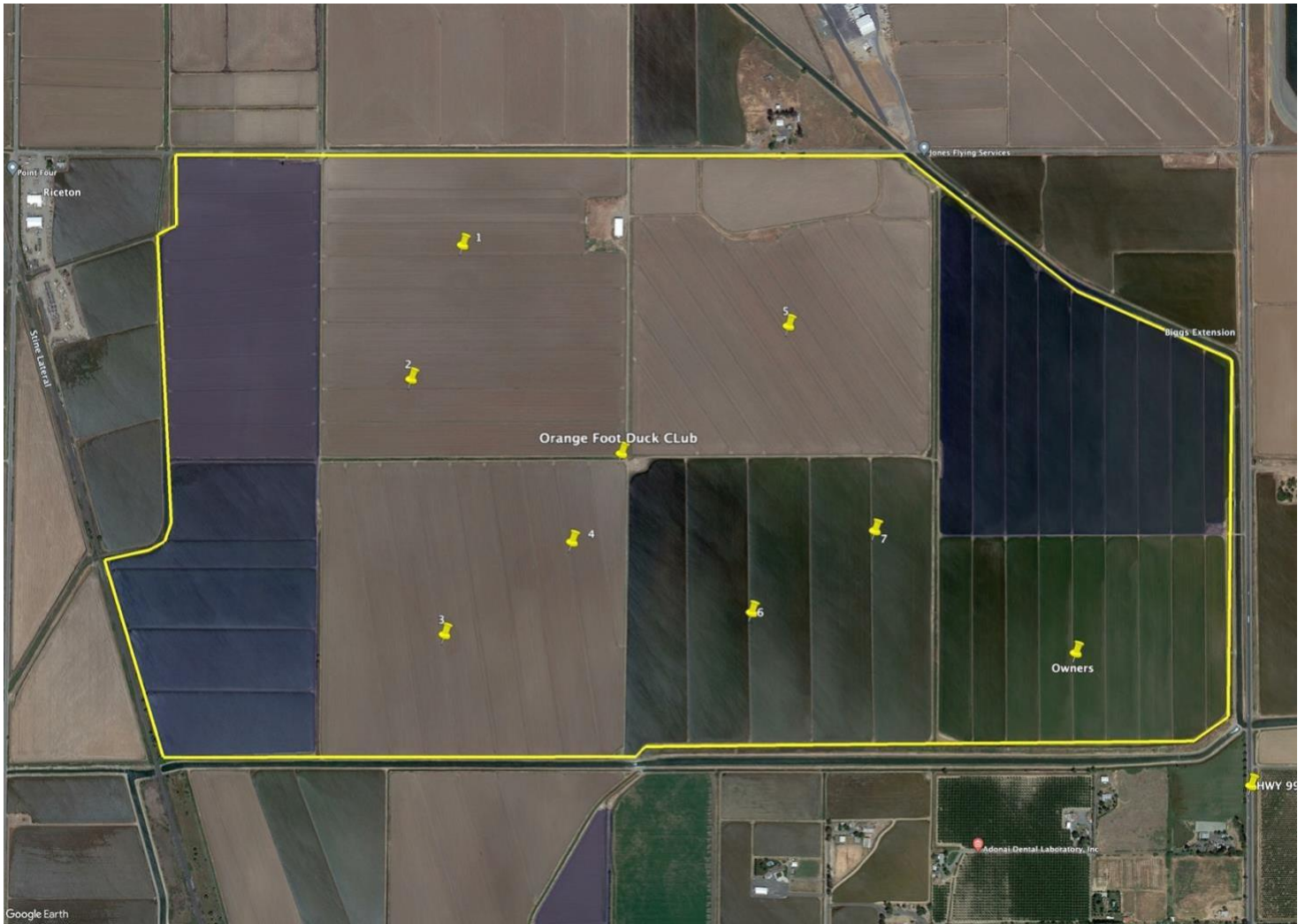
Shoots 7 days a week

Season opens once farming is finished, through junior hunt and late goose

Current blinds open:

Blind #2 – 4man blind 70 acres *\$2065.5 per seat*

Biggs



Orange Foot East Duck Club

This club is located south of Hamilton Rd and west of HWY 99. The property is just under 1000 acres with 8 blinds in rice. Areas in dark blue do not get hunted and are flooded. Purple area may be left dry and get hunted a few times per season for geese. This property shoots Saturday, Sunday and Wednesday and gets water near the opener (most years). Set and pull decoys each hunt day.

Shoots 3 days a week + weather days

Season opens once farming is finished, through junior hunt and late goose

Current blinds open:

Blind #4 – 4man blind 80 acres ***\$2,125 per seat***

Colusa



Myer (1-5 top) Ohm(1-2 bottom) Duck Club

This club is located on the north end of OHM road. Meyers road is just to the north but not connected. The cross road to the south is Hahn road. The club is just southwest of the Colusa refuge. This property shoots 7 days a week and gets water near the opener.

Shoots 7 days a week and is in the speck closure

Season opens once farming is finished, through junior hunt and late goose

Current blinds open: (Bottom of the map)

Blind #1 South End– 4man blind 120 acres *\$1,875per seat*

Colusa



Paulo Ranch Duck Club

This club is located west of Colusa and just 2 miles north of Colusa refuge. The cross roads are Jamison and Lurline Rd. The property is just under 360 acres with 4 blinds in rice and 4 blinds in natural. This property shoots 7 days a week and gets water near the opener. Trailer parking available with power and water (additional \$750)

Shoots 7 days a week In Speck Closure

Season opens once farming is finished, through junior hunt and late goose

Current blinds open:

Blind #8– 4man blind 45 acres ***\$1,800 per seat***