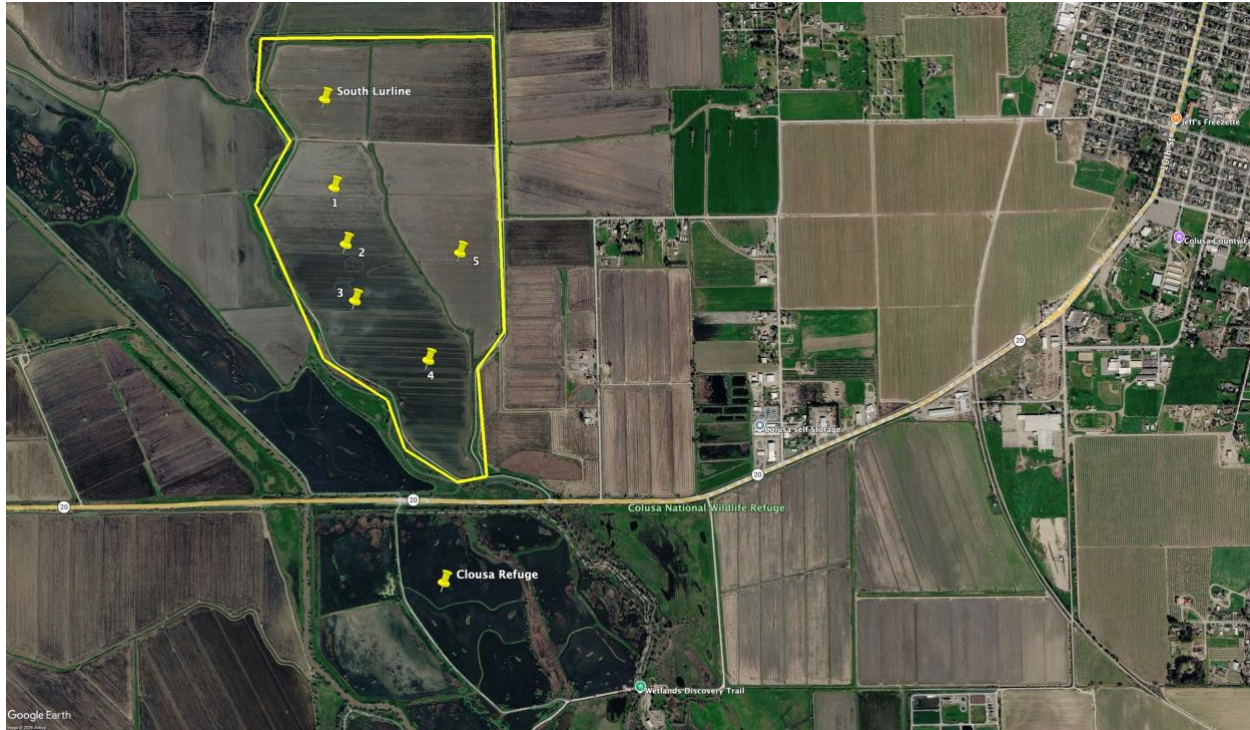


Colusa



South Lurline Duck Club (New for WWA)

This club is located directly north of the close zone at Colusa refuge. There are 5 blinds on 220 acres. The club will shoot 7 days a week with water right around the opener. All checks are east west providing great hunting opportunity. Optional trailer parking north of the property.

Shoots 7 days a week and is in the speck closure

Season opens once farming is finished, through junior hunt and late goose

Current blinds open:

Blind #1– 3man walk in blind ***\$2,000 per seat***

Blind #2– 4man blind ***\$1,875 per seat***

Blind #3– 4man blind ***\$1,875 per seat***

Blind #4– 4man blind \$1,875 per seat